

EMUGE

Taper Pipe Threads
NPT & API-LPT
with
GIGANT-IC



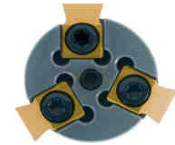
EMUGE

GIGANT-IC Body with Weldon Shank

EDP# Bar	Bar Size	Cutter Dia	No. Inserts	EDP# Tin Insert	EDP# TiALN Insert	NPT & API-LPT				
						3/4	1.00	1 1/4	1 1/2	2
GZ340050	10	0.807	3	GF6430059514	GF6430079514	X	X	X	X	X

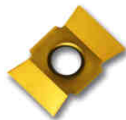


#10



GIGANT-IC Body with Weldon Shank

EDP# Bar	Bar Size	Cutter Dia	No. Inserts	EDP# Tin Insert	EDP# TiALN Insert	NPT & API-LPT				
						3/4	1.00	1 1/4	1 1/2	2
GZ340001	11	0.94	3	GF6431059514	GF6431079514		X	X	X	X
GZ340101	11	0.94	3	GF6431059514	GF6431079514		X	X	X	X
GZ340201	11	1.293	5	GF6431059514	GF6431079514			X	X	X
GZ340012	12	1.293	3	GF6432059514	GF6432079514			X	X	X
GZ340112	12	1.293	3	GF6432059514	GF6432079514			X	X	X
						2 1/2	3	3 1/2	4	4 1/2
GZ340153	13	1.585	4	GF6433059514	GF6433079514	X	X	X	X	X
GZ340143	13	1.585	4	GF6433059514	GF6433079514	X	X	X	X	X



#11
#12
#13

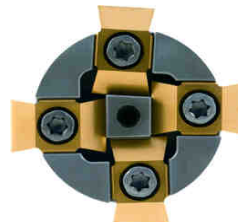


GIGANT-IC Insert Body with CAT50 Shank

EDP# Bar	Bar Size	Cutter Dia	No. Inserts	EDP# Tin Insert	EDP# TiALN Insert	NPT & API-LPT				
						2 1/2	3	3 1/2	4	4 1/2
GZ346013	13	1.585	4	GF6433059514	GF6433079514	X	X	X	X	X
GZ346003	13	1.585	4	GF6433059514	GF6433079514	X	X	X	X	X
GZ346024	14	2.069	4	GF6434059514	GF6434079514	X	X	X	X	X



#13
#14

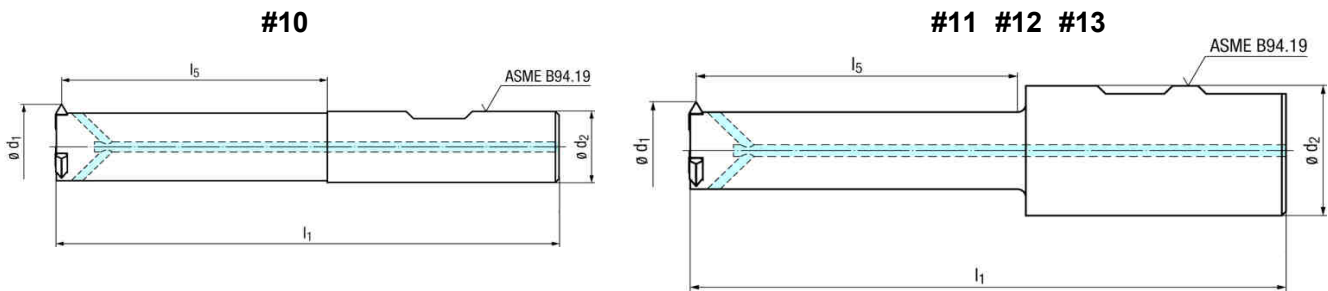


Additional Bar Specifications on Next Page

EMUGE

GIGANT-IC Insert Body with Weldon Shank

EDP Number	Bar Size	Cutter Diameter	Minimum Thread Diameter	Maximum Depth	Shank Diameter	Overall Length	Number Inserts
GZ340050	10	0.807	1.00" - M24	2.50	5/8	4.57	3
GZ340001	11	0.940	1 1/8" - M30	3.00	1 1/4	5.51	3
GZ340101	11	0.940	1 1/8" - M30	3.50	1 1/4	5.91	3
GZ340201	11	1.293	1 1/2" - M40	3.50	1 1/4	6.26	5
GZ340012	12	1.293	1 1/2" - M40	3.50	1 1/4	6.10	3
GZ340112	12	1.293	1 1/2" - M40	4.50	1 1/4	6.89	3
GZ340202	12	1.585	2.00" - M48	4.25	1 1/4	6.77	5
GZ340153	13	1.585	2.00" - M48	4.25	1 1/4	6.73	4
GZ340143	13	1.585	2.00" - M48	5.50	1 1/4	8.11	4



GIGANT-IC Insert Body with CAT50 Shank

EDP Number	Bar Size	Cutter Diameter	Minimum Thread Diameter	Maximum Depth	Taper Shank	Overall Length	Number Inserts
GZ346013	13	1.585	2.00" - M48	4.25	CAT50	9.62	4
GZ346003	13	1.585	2.00" - M48	5.50	CAT50	11.00	4
GZ346024	14	2.069	2 1/2" - M64	7.50	CAT50	13.00	4

